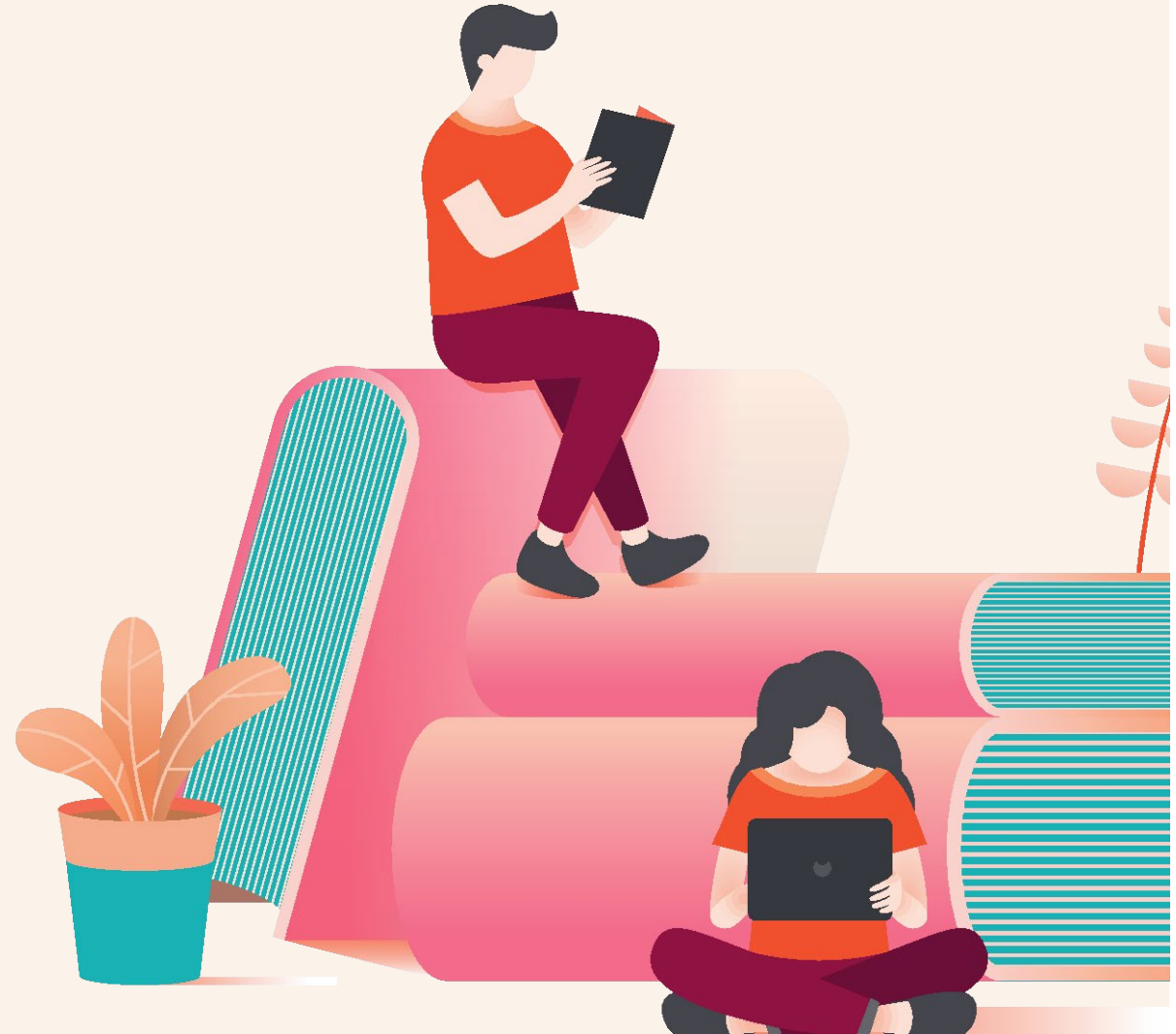


# Student Guide to Plagiarism Prevention

URKUND

# How Urkund works

1. The process begins when a student submits their document to an assignment in Brightspace.
2. The document is then analyzed by Urkund for matching content through our extensive content resources.
3. Any matching content is then further analyzed and categorized by content source.
4. When the analysis is complete, an Urkund Similarity Report is generated and sent to the teacher within the Brightspace assignment.
5. The teacher then interprets the report's analysis and findings.



# Useful information to get started with Urkund

- Multiple attempts, or submissions, to an assignment can be a great way for you and your teacher to begin a discussion on what is, and what is not, plagiarism.
- These documents will not be matched against themselves – meaning you will not 'self-plagiarize' against previous versions of your document within the same assignment.



# OVERVIEW

## Urkund Similarity Report

**ANALYSIS OVERVIEW**

13 PAGES OUT OF 26 TOTAL CONTAIN FINDINGS

**Document Overview Bar**  
Visualisation of all findings

**Quick Options**  
Reset the report to its original state, download it as a pdf-file or access this help-guide

**Findings**  
Navigation to the findings view or the entire document

**Similarity**  
Text similarity percentage

**Submission Details**  
Info about submitted file

**FINDINGS**

- 27 MATCHING TEXT**  
High similarity of content
- 6 WARNINGS**  
Unusual use of characters

**VIEW THE ENTIRE DOCUMENT**

**PRO TIPS**  
Seeing a score of 66% is not a proof of plagiarism; there could be several reasons why a score is high.

**Pro Tips**  
Tips to help interpret the analysis

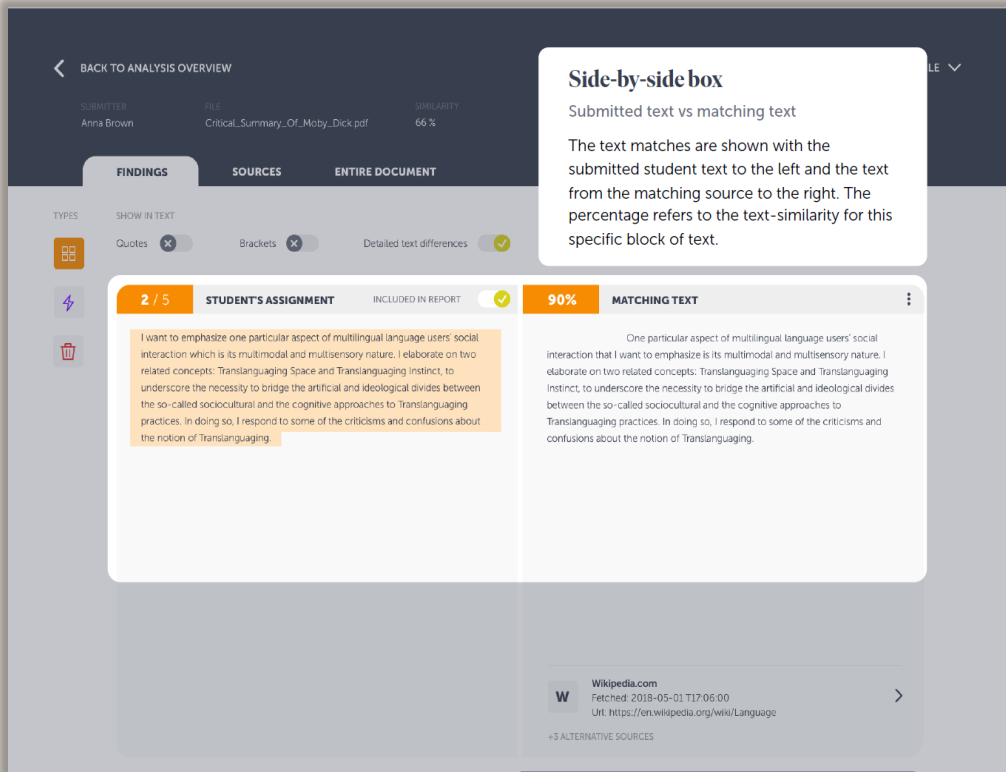
**SIMILARITY**

- 66%** this assignment
- 20%** receiver's average

**SUBMISSION DETAILS**

- SUBMITTER**  
Information URKUND
- FILE**  
Critical\_Summary\_Of\_Moby\_Dick.pdf
- SUBMITTED ON**  
2018-02-22 T11:28:00
- SUBMISSION ID**  
35826004
- WORD COUNT**  
1166
- MESSAGE**  
Dear Prof. Here is my paper.  
With best regards, Marie

# View of matched content



# Matched content by source type

## Source List – View the original source of the matching text - by source type.

